

.....Who's S/he?.....Who's S/he?.....

Who's S/he?



Manon

WHO'S SHE? MANON . . . Swiss artist whose art is her own image . . . of her own making . . . on T.V. and film, in the glossies and the galleries . . . a model, fashion designer, film star and boutique owner . . . her stars are Lola Montez, von Sternberg and Dietrich, Cocteau and tight-rope artist Philip Petit . . . exhibited her circular boudoir at **Galerie Stahl**, Zurich . . . documents her personal transformation with photos and text.



Marcel Just with Mary-Iou

WHO'S HE? ALEX SILBER . . . Swiss-born artist whose specialty is photoworks . . . his own favorite model and his own favorite subject matter . . . alumnus of **Jean Christophe Amman's** renowned Transformer show in Lucerne . . . publisher of postcards featuring his own drawings, words and photos . . . now receiving his first North American exposure in FILE Magazine.

WHO'S HE? LUIGI ONTANI . . . resurrector of history from Natura Morta to Tableau Vivant . . . resident of Rome and spirit of a new age of Italian arts . . . you saw him first at **Sonnabend Paris**, **L'Attico Rome**, **Lucio Amelio Naples**, **Der Appel Amsterdam** . . . You saw him in the Glamour issue of FILE . . . You saw him in his slim volume of photos and poetry published by **LP 220** . . . You're seeing him again in FILE Magazine and you're going to be seeing more.



Katharina Sieverding

WHO'S HE? WALTER PFEIFFER . . . an oddity from the Swiss photo scene, he stars others in his photoworks . . . known for his all-wet photowork of Marcel Just (see below) . . . infatuated with ironic rock and roll phrasing . . . another Transformer who showed at **Galerie Li Tobler** in Zurich (since closed).

WHO'S HE? MARCEL JUST . . . one of the new breed of continental commuter artists . . . divides his time between Zurich and NYC . . . "I don't want to be in any art scene, I just want to be an outcast" . . . Marylou of Sassoon's did his hair for his recent Canadian appearances . . . Anna Depuis, Miss Montreal '75, flew in for his Toronto performance . . . he's appeared at **Artists' Space**, the **Fine Arts Bldg** and **Susan Pensner** in NYC . . . Just remember that face . . . Just remember that Name.



David Buchan

WHO'S SHE? KATHERINA SIEVERDING . . . M.C. of a Dusseldorf nightclub act . . . target for a knife-throwing circus act . . . exhibitor at the **Paris Biennale** and **Documenta** . . . collaborator with **Klaus Mettig** . . . star of their mammoth photoworks and of the 1977 calendar published by the Dusseldorf print house **Gebr. Tones** . . . Recipient of a DAAD scholarship and a recent transplant to NYC . . . spitting image of a cover girl.

WHO'S HE? DAVID BUCHAN . . . connoisseur of the cultural cliché . . . the last word in fashion commentators . . . recently back from a debut tour of **GEEK CHIC** to Los Angeles, Calgary, Vancouver . . . grooms Toronto rock bands like **THE DISHES** . . . magazine writer on performance art . . . always one of the first to 'catch on' . . . publication director of **Art Metropole** and avid bowler.

WHO'S WHO? HP . . . Hank Bull and Patrick Ready, just back from California . . . touring their shadow plays, murder mysteries, and radio performances down the west coast . . . next season — England, France, Italy and Dr. Faustroll's own Circassia!

WHO'S HE? TOM SHERMAN . . . installed himself in orgone boxes at **A Space**, Toronto . . . wrote about his body in the Glamour issue of FILE . . . showed his face on the cover of Art Metropole's new book **VIDEO BY ARTISTS** . . . exhibited his writing in large blow-ups pinned to gallery walls . . . hyperventilated on film . . . performed readings of his writings like personal calisthenics and recently exposed Toronto windowshoppers to his big way with words at **Cinema Lumiere**.



Photos: Buby Damit / Luigi Ontani with Ilja Sooske.

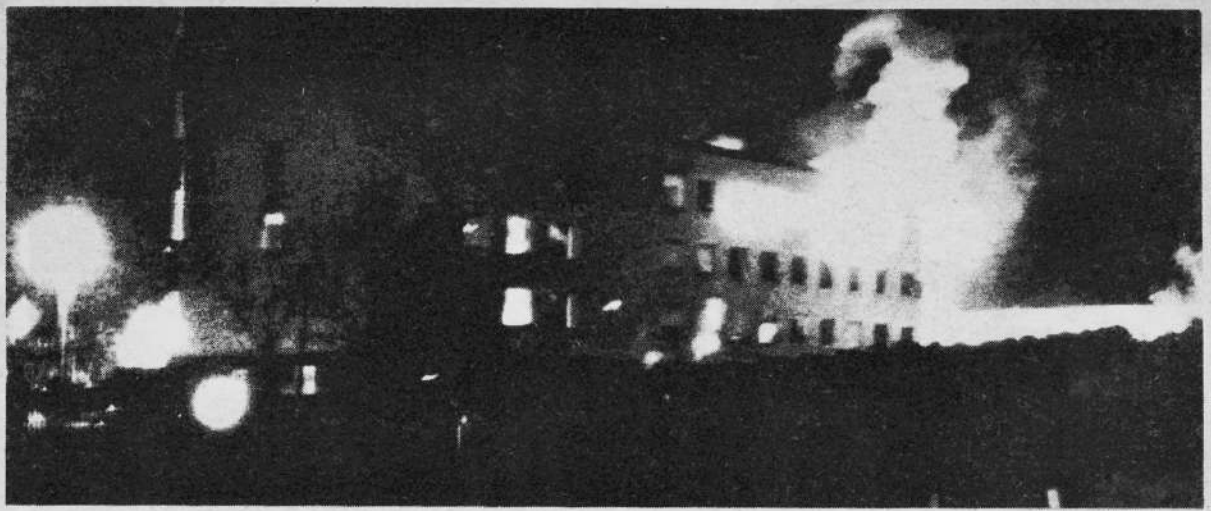


Tom Sherman

.Manon.....Manon.....Manon.....Manon.....Manon.....Manon.....



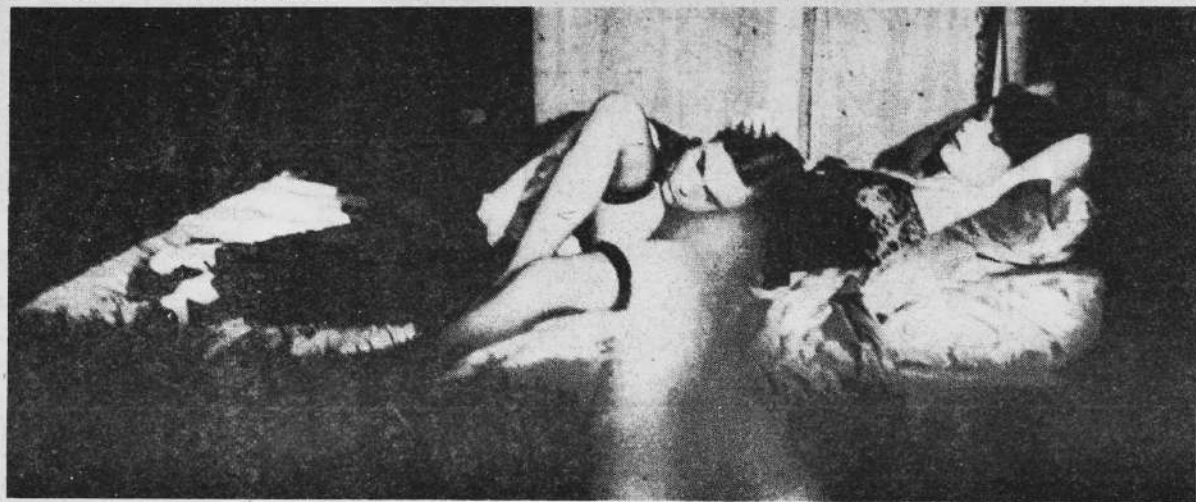
mesdames, messieurs, faites vos jeux



*une chambre qui ressemble a une reverie, une chambre veritablement spirituelle, ou l'atmosphere stagnante
est legerement teinte de rose et de bleu*



.Manon.....Manon.....Manon.....Manon.....Manon.....Manon..



l'ame y prend un bain de paresse, aromatise par le regret et le desir



..Manon.....Manon.....Manon.....Manon.....Manon.....Manon..

.....Manon.....Manon.....Manon.....Manon.....Manon.....Manon.....Manon



c'est quelque chose de crépusculaire, de bleuâtre et de rosâtre, un rêve de volupté pendant une éclipse